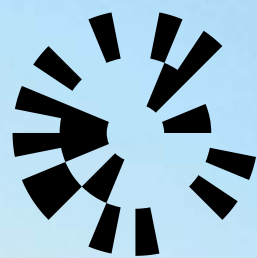


ASO GEN



ARC
Oxford

**NEXT GENERATION
OFFICES & LABS**

**6,500-92,000 SQ FT
LAUNCHING 2026**



A NEW LANDMARK FOR OXFORD'S INNOVATION COMMUNITY

- 92,000 sq ft (8,547 sq m) (NIA)
- Suites available from c.6,500 sq ft
- Single building, ground plus 2 storeys with an additional rooftop amenity space
- Back of house gas storage and clinical waste services
- Multiple goods lifts
- 164 parking spaces
- 3 miles from Oxford City Centre with buses every 7 minutes at peak times
- Oxford Cowley Rail Station coming in 2029

- Highly sustainable: meeting and exceeding Oxford City's sustainable policies
- Target BREEAM "Excellent" and 40% reduction in carbon emissions above current Building Regulations
- Within 10 minutes of John Radcliffe, Churchill and Nuffield Orthopaedic Hospitals
- Completion Q2 2026

**Scan the QR
code to view the
Ascent video**



FUTURE READY WORKSPACE

Right in the heart of ARC Oxford, Ascent brings ambition and innovation together. This new 92,000 sq ft building has been purpose-built to give pioneering teams the space to collaborate, experiment and grow.

Whether you need labs, offices, or a mix of both, the flexible design adapts to you. And with great amenities and a thriving campus community on your doorstep, Ascent isn't just a place to work, it's a place to launch what's next.

Oxford Cowley Branch Line

From 2029 the Government funded Oxford Cowley Rail Station will bring direct train services to Oxford City Centre and London Marylebone from ARC Oxford's doorstep.





Visualisation of Roof Terrace



SPECIFICATION

Designed to provide the highest quality and full occupational flexibility



Best in class facilities including a café, communal spaces and roof terrace overlooking the campus



CL2 wet lab-ready



Gym and wellbeing facilities



Goods and passenger lifts



Storage for up to 163 bikes and end of journey facilities including showers and changing rooms



164 car parking spaces



Dedicated delivery and loading bay



Back up power system



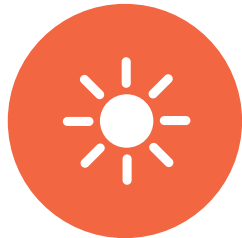
Approx 4.2m ceiling heights



SUSTAINABILITY



Highly sustainable:
targeting
BREEAM 'Excellent'
EPC-A
and Fitwel certification



Balance between daylight,
solar gains and solar
protection, embodied
carbon and views-out



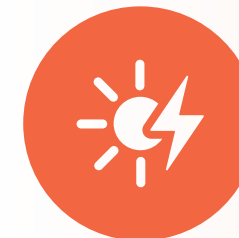
Biodiversity uplift to
achieve a minimum
5% net gain target



Natural ventilation in
amenity spaces



Creating microclimates
for outdoor comfort



Integrating
PV panels

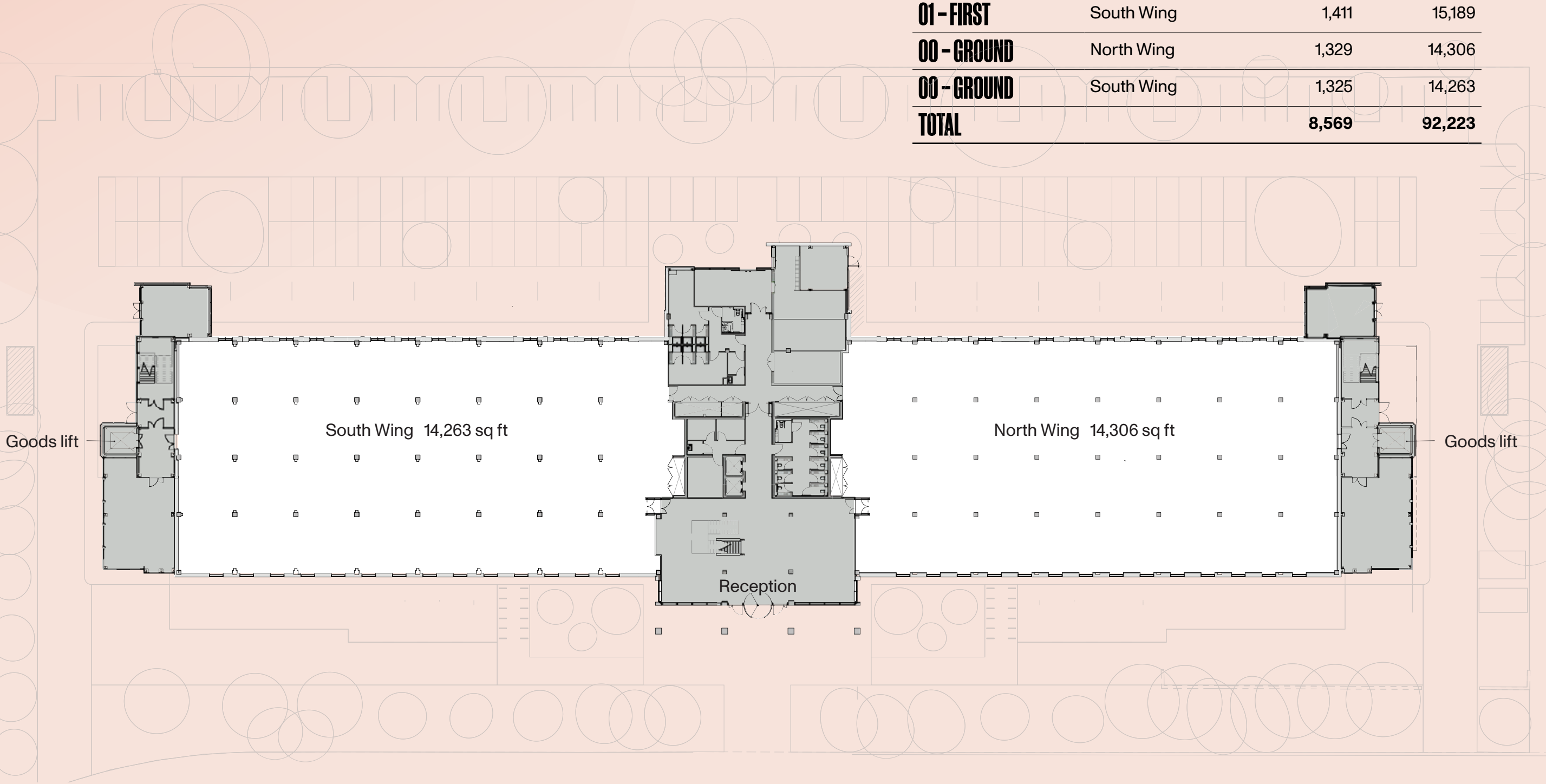




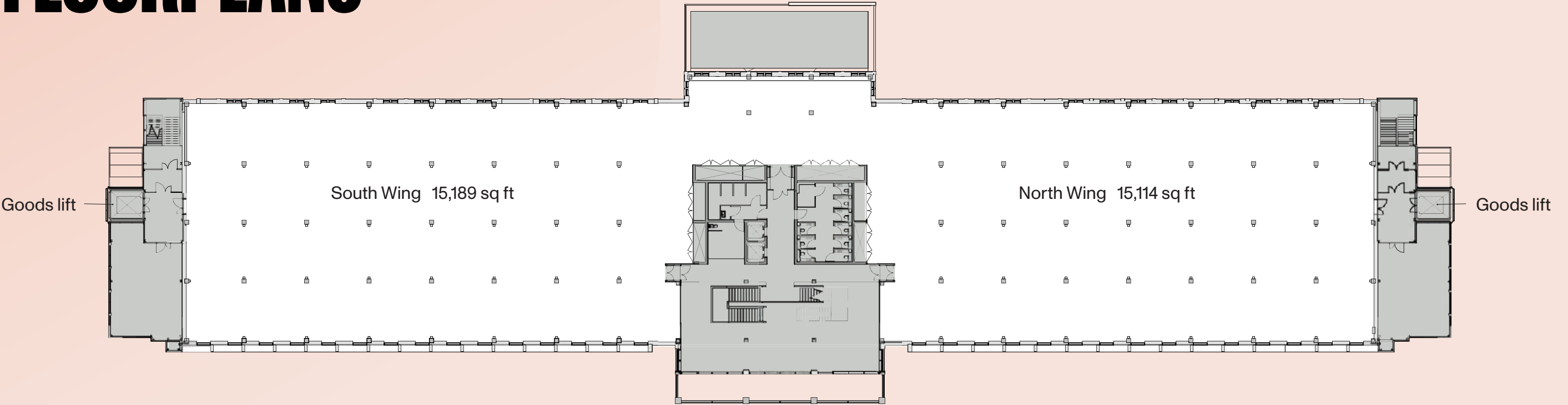
Visualisation of Gym / Wellness Area

GROUND FLOOR AND SITE PLAN

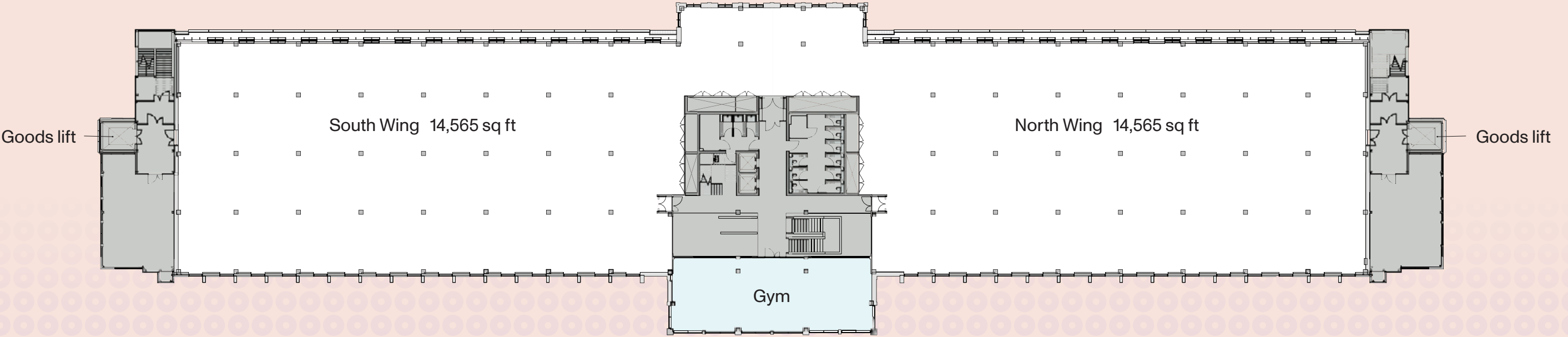
| Level | Space name | NIA Sq M | NIA Sq Ft |
|-------------|---------------|----------|-----------|
| 03 - THIRD | Club Lounge | 232 | 2,594 |
| 02 - SECOND | Amenity (Gym) | 161 | 1,734 |
| 02 - SECOND | North Wing | 1,353 | 14,565 |
| 02 - SECOND | South Wing | 1,353 | 14,568 |
| 01 - FIRST | North Wing | 1,404 | 15,114 |
| 01 - FIRST | South Wing | 1,411 | 15,189 |
| 00 - GROUND | North Wing | 1,329 | 14,306 |
| 00 - GROUND | South Wing | 1,325 | 14,263 |
| TOTAL | | 8,569 | 92,223 |



FLOORPLANS

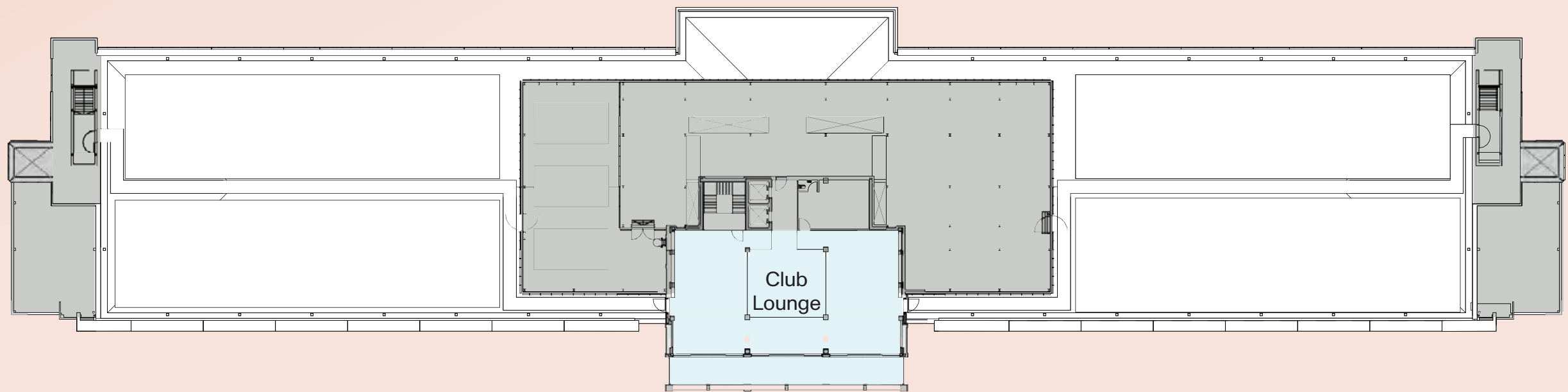


FIRST FLOOR



SECOND FLOOR

FLOORPLANS



THIRD FLOOR



Visualisation of lab fit out

AN INTEGRAL PART OF OXFORD'S WORLD-FAMOUS INNOVATION ECOSYSTEM

The city of Oxford is a life science superpower connecting talent to global impact.

- 193 Oxford University spinouts, the highest intensity in the UK averaging over 17 spinouts per year since 2011*
- University of Oxford named number 1 university in the world 7 years running**
- Oxfordshire is home to more than 40,000 active companies
- Over £1.4 billion of funding raised by Oxford spinouts in 2021

OXFORD COWLEY TRAIN STATION

(Due to open 2029)



5 MINUTES
walk from
ARC Oxford

8 MINUTES
to
City Centre

75 MINUTES
Direct train to
London
Marylebone

Oxford Airport
– 20 mins by car

Heathrow Airport
– 45 mins by car

London Paddington
– 80 mins by train

Birmingham Snow Hill
– 70 mins by train

ARC Clusters & Harwell

*<https://www.ox.ac.uk/>

**According to The Times Higher Education (THE) World University Rankings 2023



LIFE AT OXFORD

Member of the Future app

The Member of the Future app is available exclusively for ARC members and provides everything you need to make the most of your ARC campus. You can book classes or meeting rooms, enter competitions and find exclusive discounts.

We're improving the functionality all the time. Download the app [here](#).



Campus culture

At the centre of our campus is its social hub, the Oxford Factory and the Oxford Works. A beautifully designed business lounge, boasting a spacious studio for fitness classes, and a restaurant offering great food and coffee with plenty of space and seating for any number of events, meetings and informal catch ups.



Campus community

A dedicated community manager helps shape a hand-picked, curated events calendar for the best possible environment all year round. A community square – The Marketplace – with outside seating provides tranquil green space, and a perfect spot for enjoying a morning coffee, community BBQ or street food festival.

A GROWING INNOVATION CAMPUS

ARC Oxford is a nurturing environment for a community of extraordinary organisations making history at the cutting edges of their industries.

Scan here to view our ARC Oxford video.



“It’s been a great experience working with ARC to accommodate Perspectum’s Oxford based staff into this newly renovated and modern space. We are looking forward to moving in so that our staff can benefit from all the Park has to offer.”

Perspectum Diagnostics

“It is an exciting period of growth for OMass Therapeutics as we move to our new premises, bringing all our staff under one roof so we can continue to execute on our plans to discover drugs for previously undruggable targets and, ultimately, bring life changing medicines to patients.”

OMass Therapeutics

“ARC Oxford is already home to our manufacturing facility known as Oxbox, which is in operation for our viral vector manufacturing activities and also supporting the manufacturing of a COVID-19 vaccine candidate. In March 2020, as our activities and workforce expanded, we took the decision to relocate our corporate headquarters team from our existing HQ to a new office location on the Park. ARC have helpfully accommodated all of our commercial requirements with the new office and we are delighted with the quality of the building and the wider environment.”

OXB



SPACE TO CONNECT

Food and beverage

We have a range of food outlets on campus.

Oxford Factory Café

The Oxford Factory Café is the beating heart of campus, open 8 am–4 pm serving breakfast, lunch, coffee, and snacks. Expect awesome coffee, friendly service, local produce and a delicious ever-changing menu based on the seasons. The café is available for private functions and offers a range of hospitality packages.

Oxford Workshop

Our burrito and juice bar sits proudly on The Market Place, and is open daily offering made-to-order burritos, nachos, salad boxes, and more. With a partially covered decked area, this is the perfect spot for an informal meeting or lunchtime catch up with friends.



Meeting spaces

On campus we currently have the following conference and meeting room facilities available:

The Market Place

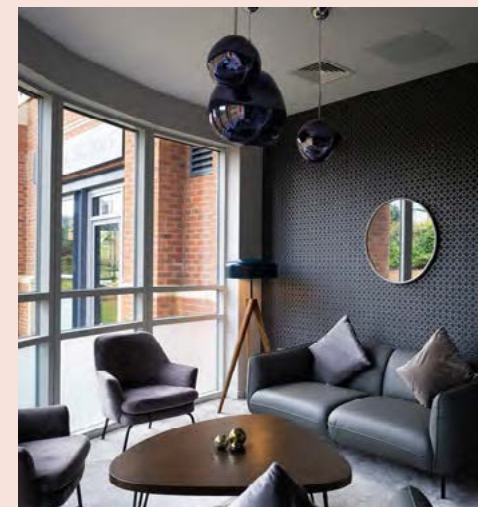
Our green communal space is used for community events, BBQs, playing badminton or for just chilling in a deck chair. The Market Place can be booked for company parties and events.

Oxford Works

The Oxford Works is our collaborative workspace designed to develop ideas, and network. Our members can book a desk, hunker down in one of our quiet spaces or make confidential calls in video call booths, or conference in our Engine Room event space.

Innovation Space

We combine the Oxford Works, Engine Room, and Board Room to create an event and conference space, available to ARC members and stakeholders.



JOIN THE ARC COMMUNITY

Being at ARC Oxford connects you with a community within the Advanced Research Clusters (ARC) portfolio of over 10,000 people and 300+ business, research and academic organisations, spanning life science, healthtech, deeptech, clean energy and digital/AI.

Backed by Brookfield, ARC exists to create world leading clusters for science, technology and innovation. Our community has exclusive benefits including events, summits, training, profile and access to space for away days and science sprints.

Our portfolio includes the Harwell campus, ARC Oxford, ARC West London in Hammersmith and ARC Uxbridge close to Heathrow, and we will be investing in adding millions of sq ft over the next few years.

HARWELL



The UK's leading science and innovation campus.

550,000 sq ft over 700 acres.

Oxford Nanopore

Barinthus Biotherapeutics

Moderna

Aglient Technologies

The Rosalind Franklin Institute

Catalent

UK Health Security Agency



ARC
West London



A transforming riverside home for UK life science.

250,000 sq ft over 3.5 acres.

Epsilogen

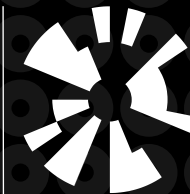
GENinCode

Sania Therapeutics

Cathay Pacific

Flutter

Econic



ARC
Uxbridge



A centre for innovation within London's green belt.

334,577 sq ft over 72 acres.

Bristol Myers Squibb

Amgen

Daiichi-Sankyo

Parexel

Adapt

Jato

Sterling Lexicon

CONTACT US

For more information please
contact the letting agents:



Duncan May
M: +44 (0)7879 883886
E: duncan.may@bidwells.co.uk

Ed Berridge
M: +44 (0)7776 418459
E: edward.berridge@bidwells.co.uk

Holly Dawson
M: +44 (0)7917 243887
E: holly.dawson@bidwells.co.uk

www.bidwells.co.uk



Chris Valentine
T: +44 (0)7747 758289
E: chris.valentine@jll.com

Sarah Brisbane
T: +44 (0)7769 201458
E: sarah.brisbane@jll.com

Bridget Partridge
T: +44 (0)7921 309816
E: bridget.partridge@jll.com

www.jll.co.uk



Richard Venables
T: +44 (0)7816 491860
E: richard.venables@cbre.com

Kevin Wood
T: +44 (0)7900 584150
E: kevin.wood@cbre.com

www.cbre.com

Misrepresentation Act

Advanced Research Clusters Ltd or JLL or CBRE or Bidwells give notice that these property particulars are provided as a general outline for guidance only. Intending purchasers or tenants should not rely on them as statements or representations of fact, but must satisfy themselves by inspection or otherwise as to their accuracy. As such, it does not constitute or form part of a contract. No person in the employ of Advanced Research Clusters Ltd or JLL or CBRE or Bidwells as representing agents of the property displayed has the authority to make or give any representation or warranty in relation to the property. Unless otherwise stated, all rents and prices quoted in these property particulars are exclusive of VAT which may be payable in addition to the amount quoted. Subject to contract.

January 2026

BECOME A MEMBER OF THE FUTURE

Speak to us today to find out how
your business could benefit as a
member of ARC at ARC Oxford.

Will Crane
Leasing Manager
+44 (0)7503 211147
will.crane@arcgroup.io

Dan Williams
Director - Asset Manager
+44 (0)7795 331925
daniel.williams@arcgroup.io

David Williams
Senior Director
+44 (0)7443 887500
david.williams@arcgroup.io

www.arcgroup.io/oxford

