

BUILDINGS 4610 & 4620

OX4 2SU

Fully fitted CL2 labs
and offices in two
adjoining buildings
Available Q2 2025

ARC.



FULLY FITTED CL2 LABS AND OFFICES IN TWO ADJOINING BUILDINGS

BUILDING 4610: 5,811 SQ FT
BUILDING 4620: 10,377 SQ FT

AVAILABLE Q2 2025

Buildings 4610 and 4620 will be fully fitted CL2 lab and offices located at the heart of ARC Oxford, home to a thriving community of world-changing companies.



Write up / office area



Fitted CL2 laboratory space



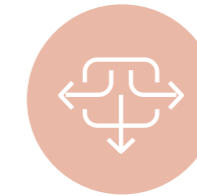
50:50 lab:office split



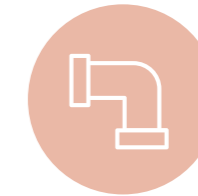
Kitchenette



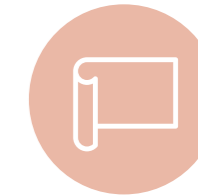
Server room



Comfort cooling (6 air changes p/h to lab)



Vulcathene drainage



Vinyl floors



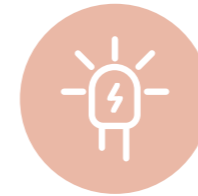
Benching



CAT 5 water installation



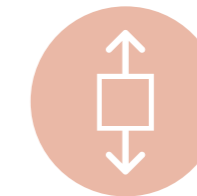
Wipeable ceiling tiles



LED lighting



Raised access floors



Passenger lift



External gas store



EV charging and dedicated parking



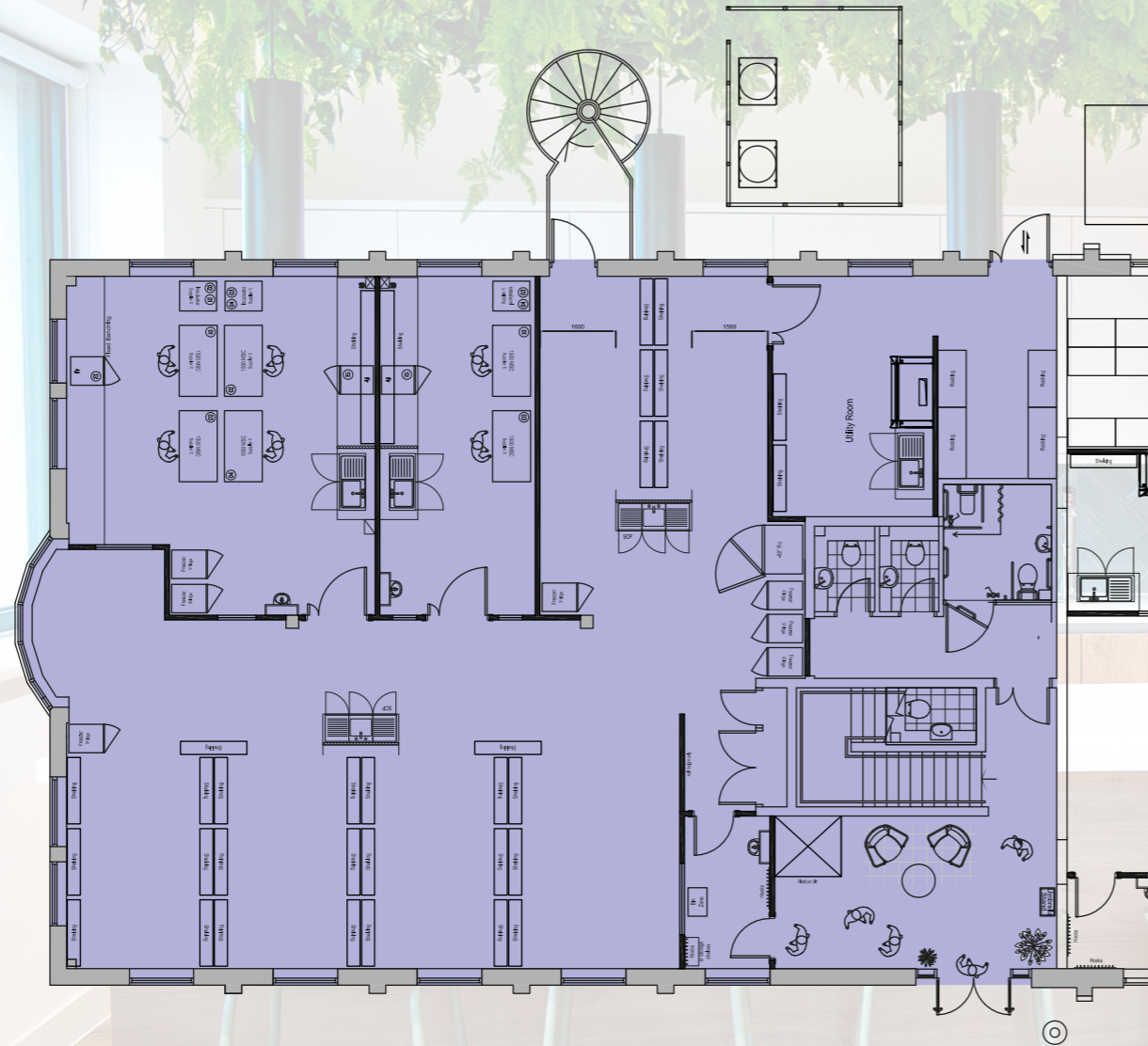
BUILDING 4610: 5,811 SQ FT



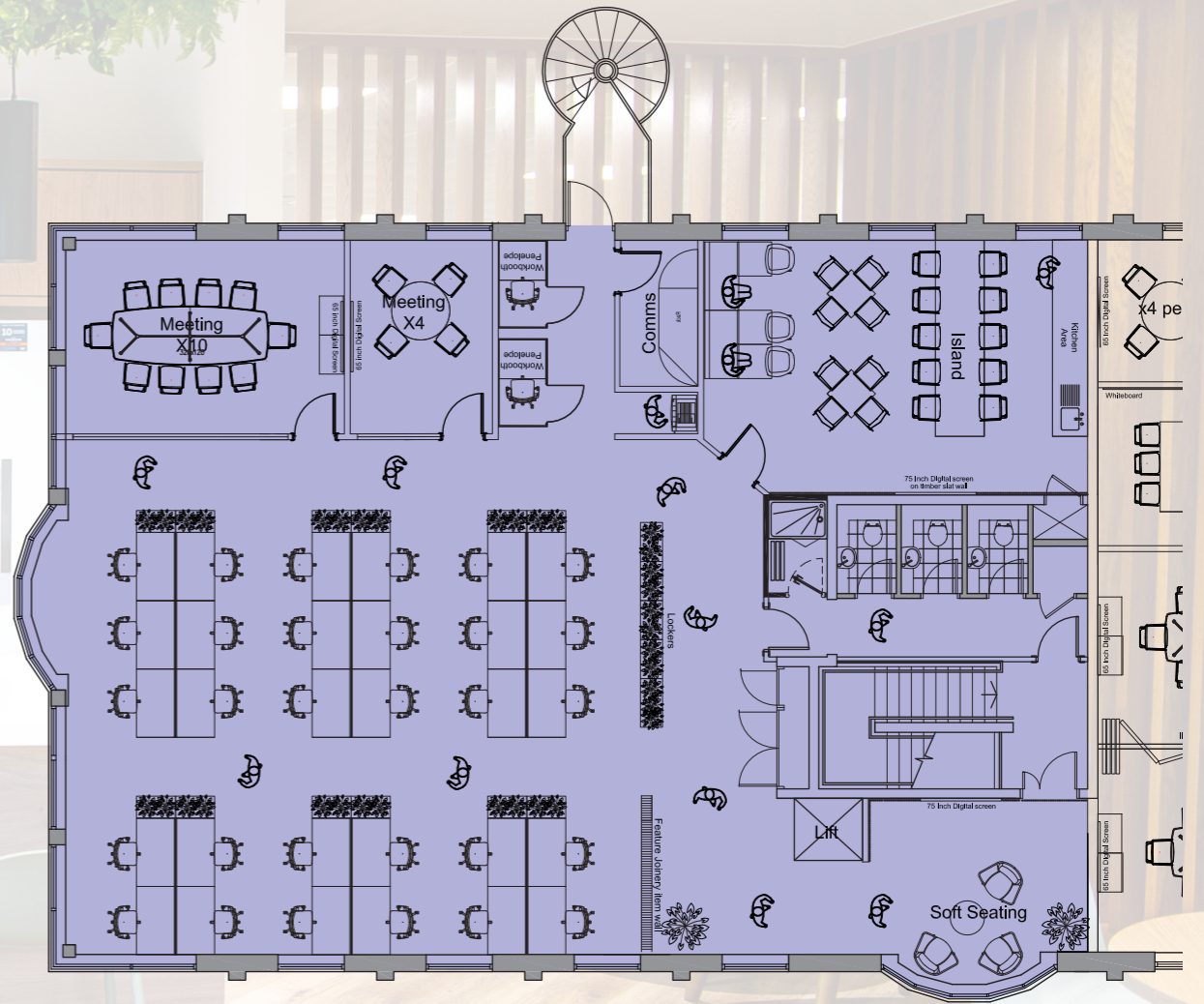
25 dedicated parking spaces



EPC C
(to be assessed after refurbishment)



Ground floor labs



First floor office

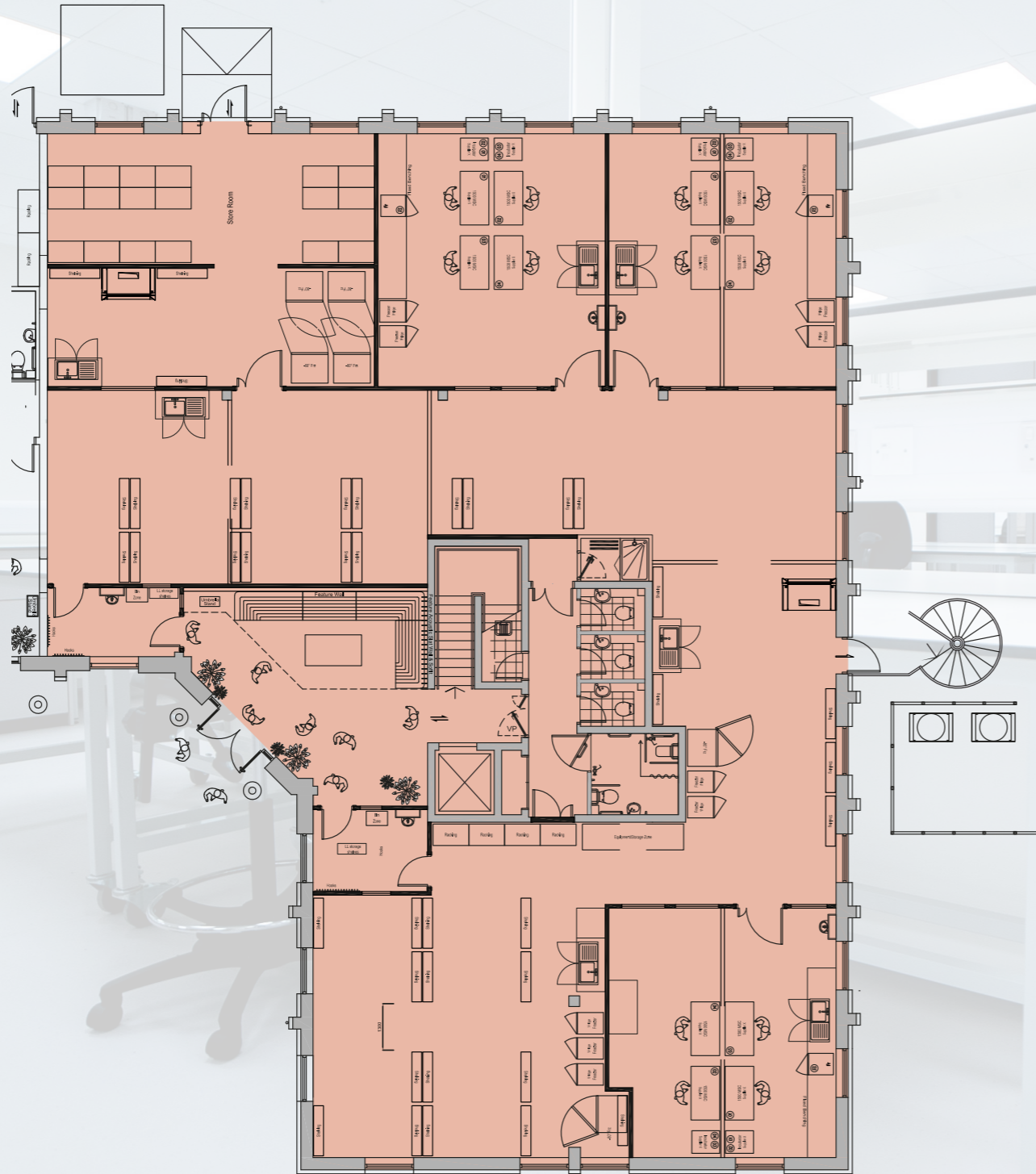
BUILDING 4620: 10,377 SQ FT



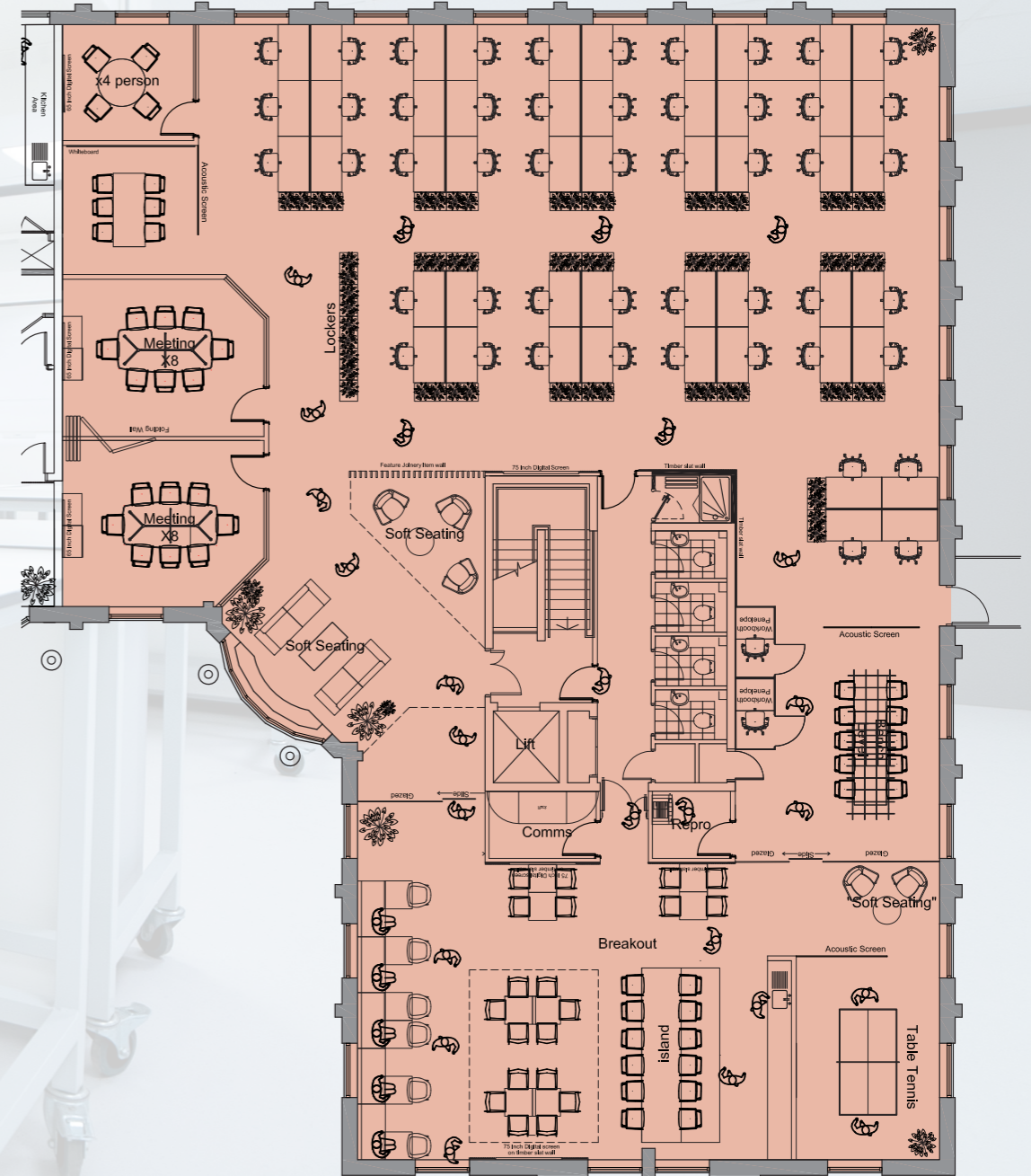
46 dedicated parking spaces



EPC C
(to be assessed after refurbishment)



Ground floor labs








First floor offices

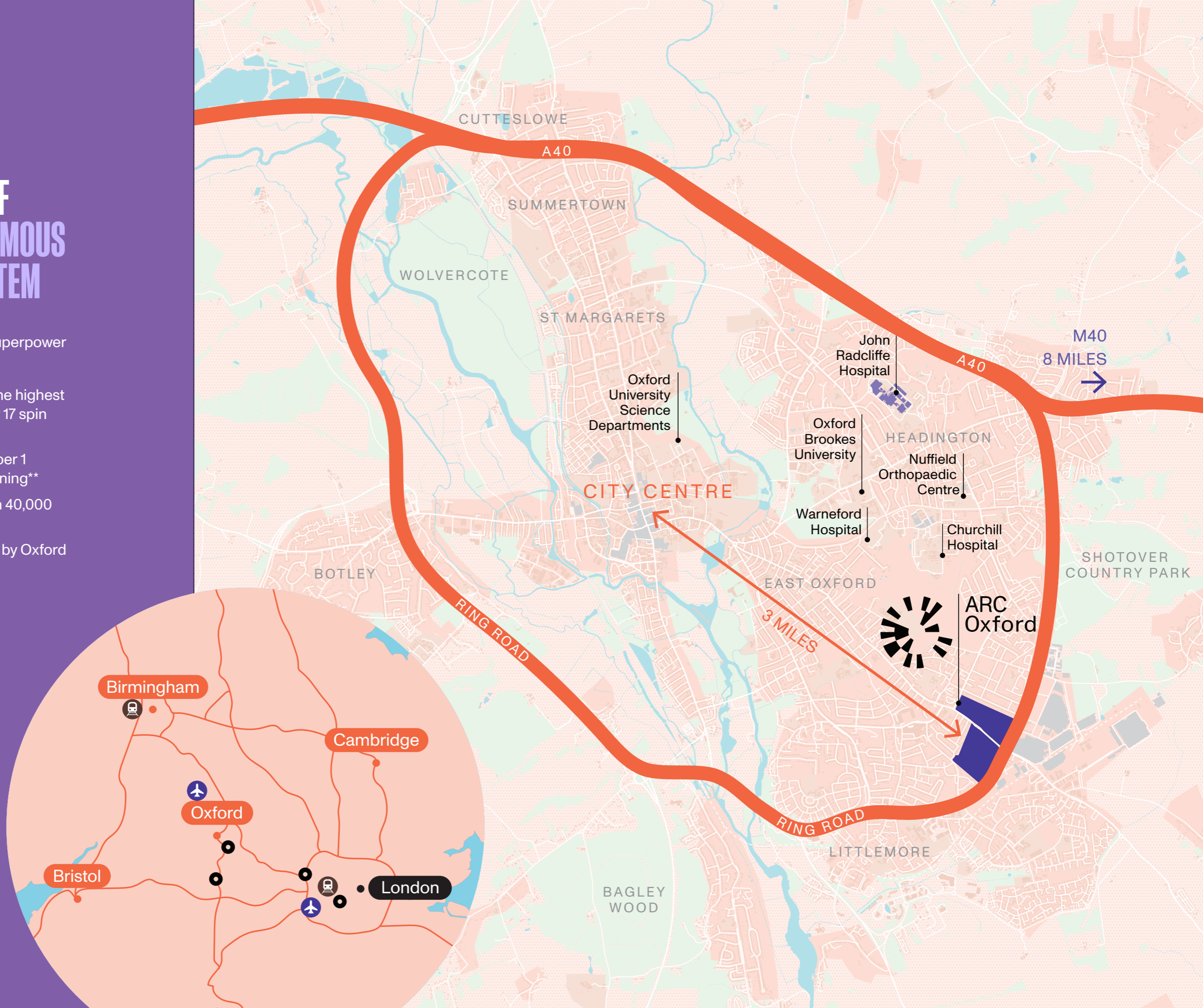
AN INTEGRAL PART OF OXFORD'S WORLD-FAMOUS INNOVATION ECOSYSTEM

The city of Oxford is a life science superpower connecting talent to global impact.

- 193 Oxford University spin outs, the highest intensity in the UK averaging over 17 spin outs per year since 2011*
- University of Oxford named number 1 university in the world 7 years running**
- Oxfordshire is home to more than 40,000 active companies
- Over £1.4 billion of funding raised by Oxford spinouts in 2021

-  Oxford Airport – 20 mins by car
-  Heathrow Airport – 45 mins by car
-  London Paddington – 80 mins by train
-  Birmingham Snow Hill – 70 mins by train
-  ARC Clusters & Harwell

*<https://www.ox.ac.uk/>
 **According to The Times Higher Education (THE) World University Rankings 2023



CAMPUS-WIDE AMENITIES



OXFORD FACTORY

A cafe and restaurant with a great selection of food and drink for whatever the occasion. If its just a quick coffee or a bigger lunch with a number of colleagues.



SHOPPING

Shopping opportunities of Oxford retail park including M&S, Tesco and Boots



HOTEL

Premier Inn on-site



DAVID LLOYD GYM

Spa with steam room and sauna

- 6 Tennis courts (indoor and outdoor)
- Fully equipped gym
- Indoor pool
- Exercise classes



THE MARKET PLACE

A community square with a landscaped open lawn area hosting outdoor events all year round

OXFORD WORKS

A collaborative workspace to develop ideas, network and come together

- Hire a desk from 1 hour
- Quiet spaces for focused work
- Board rooms
- Seminar theatre
- Pool table

A GROWING INNOVATION CAMPUS

ARC Oxford is a nurturing environment for a community of extraordinary organisations making history at the cutting edges of their industries.

“It’s been a great experience working with ARC to accommodate Perspectum’s Oxford based staff into this newly renovated and modern space. We are looking forward to moving in so that our staff can benefit from all the Park has to offer.”

Perspectum Diagnostics

“It is an exciting period of growth for OMass Therapeutics as we move to our new premises, bringing all our staff under one roof so we can continue to execute on our plans to discover drugs for previously undruggable targets and, ultimately, bring life changing medicines to patients.”

OMass Therapeutics

“ARC Oxford is already home to our manufacturing facility known as Oxbox, which is in operation for our viral vector manufacturing activities and also supporting the manufacturing of a COVID-19 vaccine candidate. In March 2020, as our activities and workforce expanded, we took the decision to relocate our corporate headquarters team from our existing HQ to a new office location on the Park. ARC have helpfully accommodated all of our commercial requirements with the new office and we are delighted with the quality of the building and the wider environment.”

Oxford BioMedica

OrganOx
living organs for life

Perspectum
Diagnostics

OxfordBioMedica

Veeva

accession
therapeutics

Jazz Pharmaceuticals

oxa
Universal Autonomy

spybiotech

ivyfarm
technologies

Oxford BioDynamics

GILEAD
Creating Possible

OMass
THERAPEUTICS

CANCER
RESEARCH
UK

ULTROMICS™

SELOXIUM

PENNINGTONS
MANCHES

TFP
Oxford Fertility

FREETHS

BLACKBERRY CLINIC
Back, Neck and Joint Pain Specialist

NHS

MOTOR
HARLEY-DAVIDSON
CYCLES

OXFAM

Nielsen

FluoRok
REINVENTING FLUORINATION

CONNECT WITH THE WIDER ARC COMMUNITY, ITS INFRASTRUCTURE AND EVENTS

Being at ARC Oxford connects you with a community within the Advanced Research Clusters (ARC) portfolio of over 10,000 people and 300+ business, research and academic organisations, spanning life science, healthtech, deeptech, clean energy and digital/AI.

Backed by Brookfield, ARC exists to create world leading clusters for science, technology and innovation. Our community has exclusive benefits including events, summits, training, profile and access to space for away days and science sprints. Our portfolio includes the Harwell campus, ARC Oxford, ARC West London in Hammersmith and ARC Uxbridge close to Heathrow, and we will be investing in adding millions of sq ft over the next few years.

HARWELL

Oxfordshire

The UK's leading science and innovation campus.



ARC West London

A transforming riverside home for UK life science in Hammersmith.



ARC Uxbridge

A centre for innovation within London's green belt and close to Heathrow.



DEVELOPER

ARC

David Williams
M: +44 (0)7443 887 500
E: david.williams@arcgroup.io

Dan Williams
M: +44 (0)7795 331925
E: dan.williams@arcgroup.io

Will Crane
M: +44 (0)7503 211147
E: will.crane@arcgroup.io

www.arcgroup.io

LETTING AGENTS

JLL

Paddy Shipp
T: +44 (0)74691 55531
E: paddy.shipp@jll.com

Bridget Partridge
T: +44 (0)7921 309816
E: bridget.partridge@jll.com

www.jll.co.uk

CBRE

Richard Venables
T: +44 (0)7816 491860
E: richard.venables@cbre.com

Kevin Wood
T: +44 (0)790 058 4150
E: kevin.wood@cbre.com

Charlotte Reaney
T: +44 (0)784 168 4842
E: charlotte.reaney@cbre.com

www.cbre.com

Bidwells

Duncan May
M: +44 (0)7879 883886
E: duncan.may@bidwells.co.uk

www.bidwells.co.uk



Scan here to view our
ARC Oxford video.

Misrepresentation Act

Advanced Research Clusters Ltd or JLL, CBRE and Bidwells give notice that these property particulars are provided as a general outline for guidance only. Intending purchasers or tenants should not rely on them as statements or representations of fact, but must satisfy themselves by inspection or otherwise as to their accuracy. As such, it does not constitute or form part of a contract. No person in the employ of Advanced Research Clusters Ltd or JLL, CBRE and Bidwells as representing agents of the property displayed has the authority to make or give any representation or warranty in relation to the property. Unless otherwise stated, all rents and prices quoted in these property particulars are exclusive of VAT which may be payable in addition to the amount quoted. Subject to contract. September 2024